

BEFORE THE BOARD OF COUNTY COMMISSIONERS  
FOR COLUMBIA COUNTY, OREGON

In the Matter of Rate Adjustments for            )  
Curbside Collection Services for                )       ORDER NO. 30-2015  
Franchise Areas Covering Rural                 )  
Columbia County                                     )

WHEREAS, Section 5.01(A) of the Columbia County Solid Waste Management Ordinance (“SWMO”) authorizes the Board of County Commissioners, upon its own recommendation or the recommendation of the Solid Waste Advisory Committee (SWAC), to approve and establish rate adjustments; and

WHEREAS, Section 5.01(A)(4) of the SWMO authorizes the Board to increase or decrease rates based on the cost of doing business; and

WHEREAS, Section 5.01(B)(6) of the SWMO provides that in determining rates, the Board shall give due consideration to, among other things, a reasonable rate of return to the franchisee based upon a percentage of gross receipts under the franchise; and

WHEREAS, in May, 2015, the SWAC At-Large Members and County Staff reviewed proposed rate adjustments for curbside collections services by Waste Management, for its rural Scappoose and Vernonia franchise service areas, and Waste Connections (dba Hudson Garbage Service) for its rural St. Helens, Clatskanie, and Rainier franchise service areas; and

WHEREAS, the proposed rate adjustments were supported by Detail Cost Reports (DCRs) submitted by Waste Management and Waste Connections/Hudson. The 2014 DCRs that Waste Management submitted showed operating margins within 8-14% for the rural Scappoose and Vernonia areas. The 2014 DCRs that Waste Connections/Hudson submitted showed operating margins within 8-14% for rural St. Helens and Clatskanie; however, the operating ratio for rural Rainier was 1.3%; and

WHEREAS, the SWAC policy is to recommend a hauler-requested rate adjustment to the Board when the operating margin for the franchise area falls below 8%, and Waste Connections has requested a 6% rate increase; and

WHEREAS, following review of the DCRs, the SWAC voted unanimously to recommend to the Board of County Commissioners a 6% rate increase for curbside collection services for the rural Rainier area; and

WHEREAS, the SWAC also recommended a disposal pass-through rate increase of \$0.10 for all franchise areas, in accordance with Section 5.01(A)(4), to incorporate the annual Consumer Price Index (CPI) adjusted rates for disposal at the transfer station; and

WHEREAS, following published notice, the Board held a hearing on June 24, 2015 on the proposed rate adjustments for curbside collection services by franchised haulers for residents and businesses in rural Columbia County; and

WHEREAS, after deliberating on the proposed rate adjustments, the Board determined that

an increase of \$.0.10 for all franchise areas is necessary as a pass-through to cover the transfer station's annual CPI-adjusted disposal rate; and

WHEREAS, the Board also determined that the SWAC recommended rate increase for the rural Rainier franchise area is necessary to cover the costs of the waste-disposal program without reducing services to the public; and

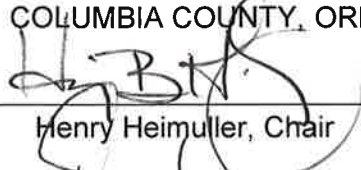
WHEREAS, the Board found that the operating margins for all other franchise areas do not justify a rate adjustment at this time, other than to accommodate the CPI-adjusted, pass-through rate for disposal.

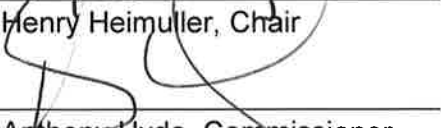
NOW, THEREFORE, IT IS HEREBY ORDERED, as follows:

1. In addition to the findings in the staff's Board communication dated May 22, 2015, attached hereto as Exhibit A and incorporated herein by this reference, the Board adopts the following supplemental findings:
  - A. That based on the cost of doing business, an increase in curbside collection rates for the rural Rainier franchise area is justified; and
  - B. That the proposed increase in curbside collection rates for the rural Rainier franchise area is just, fair, reasonable, and sufficient to provide proper service to the public; and
  - C. That the proposed increase in curbside collection rates to pass through the CPI-adjusted disposal rate increase is justified for all franchise areas and is just, fair, reasonable and sufficient to provide proper service to the public.
2. The Board adopts rate increases in curbside collection services proposed in Exhibit A.
3. The rate increases shall be effective July 1, 2015.

Dated this 24<sup>th</sup> day of June, 2015.

BOARD OF COUNTY COMMISSIONERS  
FOR COLUMBIA COUNTY, OREGON

By:   
Henry Heimuller, Chair

By:   
Anthony Hyde, Commissioner

By:   
Earl Fisher, Commissioner

Approved as to form

By:   
Office of County Counsel

## **BOARD COMMUNICATION**

FROM THE LAND DEVELOPMENT SERVICES DEPARTMENT

MEETING DATES: **June 24, 2015 Regular Board Meeting**

**TO: BOARD OF COUNTY COMMISSIONERS**

**FROM:** Todd Dugdale, Director of Land Development Services

**DATE:** May 22, 2015

**SUBJECT: PUBLIC HEARING  
2015 Solid Waste Collection Rate Review**

### **SUMMARY:**

Each year, the County reviews solid waste collection rates using a uniform Detailed Cost Report (DCR) rate review procedure established in 2011 which is designed to provide the information necessary for the County to make rate setting decisions pursuant to Section 5.01 of the Solid Waste Management Ordinance (**Attachment 1**). Under the DCR procedure, an operating ratio for each collection service area is determined using detailed cost data presented by each collection franchisee in a standard format prescribed by the County. The operating ratio is a measure, expressed as a percentage, of what proportion of a collection franchisee's revenue is left over, before taxes, after paying for the variable costs of providing the service. The County has established a policy that an acceptable operating ratio will be in the range of 8-14% with a target operating ratio of 11%. If the DCR for the previous year indicates an operating ratio which is less than 8%, a rate adjustment to the target 11% may be made. If the operating ratio falls within the 8-14% acceptable range, no rate adjustment would be allowed.

In April 2015, Waste Management and Waste Connections, the two solid waste collection franchisees serving Columbia County, submitted confidential Detailed Cost Reports (DCRs) for calendar year 2014 to the Columbia County Solid Waste Advisory Committee (SWAC) At-Large members and Staff. Confidential detailed cost reports are submitted to the Board under separate cover and are not to be released to the public. A map of the franchise collection service areas is contained in **Attachment 2**. The DCRs were reviewed by SWAC at public meetings on Tuesday, May 5, 2015 and Monday, May 18, 2015. Revisions were made to the DCRs based on SWAC review and a recommendation was forwarded to the Board of Commissioners.

On June 3, 2015, Staff briefed the Board concerning the 2015 Solid Waste Collection rate requests from Waste Management (Scappoose and Vernonia Rural Areas and Rural Drop Box) and Waste Connections dba Hudson's Garbage Service (St. Helens, Rainier and Clatskanie Rural Areas).

The Board referred the rate requests to a public hearing on June 24, 2015. Public notice was provided per Chapter 5 of the Solid Waste Management Ordinance by mailed notice to parties and published twice in the Chronicle, Spotlight, Clatskanie Chief and Independent newspaper at least 10 days prior to the hearing. The proposed rates have also been posted on the County's website. Any written testimony to date is attached.

## EXHIBIT A

### **PROPOSED RATE ADJUSTMENTS:**

Rate adjustment proposals for Columbia County's two franchised solid waste collection haulers are described below.

#### **Waste Management Proposed Rate Adjustments:**

Proposed rate adjustments for the Waste Management franchise area (Vernonia and Scappoose unincorporated areas) are contained in **Attachment 3** and are summarized below. Waste Management has not proposed any changes to its services to their rural Scappoose and Vernonia customers in 2014. Currently, all Scappoose and Vernonia rural residential customers receive every-other-week (EOW) curbside recycling services in conjunction with solid waste collection, the cost of which is built into the collection rate.

For the **Unincorporated Scappoose Service Area**, the Waste Management DCR indicates a projected operating ratio of 13.7%, within the acceptable operation margin range of 8 to 14%. Therefore no rate increase other than the tipping fee CPI pass through is indicated.

For the **Unincorporated Vernonia Service Area**, the DCR indicates a projected operating ratio of 10.6%, within the acceptable operation margin range of 8 to 14%. Therefore no rate increase other than the tipping fee CPI pass through is indicated.

Typical residential collection service rates under the request would be adjusted as follows:

<b>Franchise Area</b>	<b>Current Services</b>	<b>Current Rate</b>	<b>Rate Increase</b>	<b>Disposal Pass-Thru</b>	<b>New Rate</b>
<b>Scappoose-Rural</b>	<b>32 Gal. Weekly Recycling EOW</b>	<b>\$26.81</b>	<b>0% \$0</b>	<b>\$.10</b>	<b>\$26.91</b>
<b>Vernonia- Rural</b>	<b>32 Gal. Weekly Recycling EOW</b>	<b>\$24.84</b>	<b>0% \$0</b>	<b>\$.10</b>	<b>\$26.94</b>

#### **Waste Connections Proposed Rate Adjustments:**

Proposed rate adjustments for the Waste Connections franchise area (Clatskanie, St. Helens and Rainier unincorporated areas) are contained in **Attachment 4** and are summarized below. Currently, all St Helens, Clatskanie, and Rainier rural residential customers receive every-other-week (EOW) curbside recycling services in conjunction with solid waste collection, the cost of which is built into the collection rate. No new services are proposed for the unincorporated Clatskanie, St. Helens or Rainier service areas in 2015.

For the **Unincorporated St. Helens Service Area**, the Waste Connections DCR indicates a projected operating ratio of 11.9%, within the acceptable operation margin range of 8 to 14%. Therefore no rate increase other than the tipping fee CPI pass through is indicated.

For the **Unincorporated Clatskanie Service Area**, the DCR indicates a projected operating ratio of 9.9%, indicating that no rate adjustment is required.

## EXHIBIT A

For the **Unincorporated Rainier Service Area**, the DCR indicates a projected operating ratio of 1.3%, below the acceptable range of 8-14%. The principal reasons for the low operating margin as demonstrated by the DCR are recycling costs and an operating loss in the commercial roll off container business in Rainier. The DCR policy would allow consideration of a rate increase of 9.7% to reach a target 11% operating margin, However, based on concerns over loss of their customer base, Waste Connections is requesting a 6% rate increase.

Typical residential collection service rates under the request would be adjusted as follows:

<b>Franchise Area</b>	<b>Current Services</b>	<b>Current Rate</b>	<b>Rate Increase</b>	<b>Disposal Pass-Thru</b>	<b>New Rate</b>
<b>St. Helens-Rural</b>	<b>32 Gal. Weekly Recycling EOW</b>	<b>\$28.09</b>	<b>0% \$0</b>	<b>\$.10</b>	<b>\$28.19</b>
<b>Clatskanie-Rural</b>	<b>32 Gal. Weekly Recycling EOW</b>	<b>\$28.17</b>	<b>0% \$0</b>	<b>\$.10</b>	<b>\$28.27</b>
<b>Rainier-Rural</b>	<b>32 Gal. Weekly Recycling EOW</b>	<b>\$26.11</b>	<b>6% \$1.56</b>	<b>\$.10</b>	<b>\$27.77</b>

### **RECOMMENDATION:**

Based on a review of revised detailed cost information submitted in support of the franchise hauler requests, the Solid Waste Advisory Committee and Staff recommend approval of the above described collection franchisee rate adjustments. If approved by the Board of Commissioners, the new collection rates including the CPI tipping fee pass through would become effective on July 1, 2015.

### **ATTACHMENTS:**

1. Criteria For Determination of Rates-Chapter 5 of the Solid Waste Management Ordinance
2. Collection Franchise Area Map.
3. Waste Management Proposed Rates for the Scappoose and Vernonia rural service areas.
4. Waste Connections(dba Hudson Garbage Service) Proposed Rates and Deatiled Cost Report for for the St Helens, Clatskanie and Rainier rural service areas.

# **ATTACHMENT 1**

## **Chapter 5 Columbia County Solid Waste Ordinance**

### **Criteria For Determination of Rates**

# ATTACHMENT 1

## CHAPTER V RATES FOR COLLECTION AND DISPOSAL SERVICE

### Section 5.01 Determination Of Rates

- (A) Upon recommendation by the Committee or upon its own recommendation, the Board may by ordinance, order, or resolution and after public hearing:
- (1) Approve and establish rates filed by applicants for franchises if it finds that such rates are not demonstratively unreasonable and are not substantially higher than those charged generally in the county under similar service requirements and for the same or similar quality of service or it may establish a different rate schedule.
  - (2) Establish uniform rates throughout the county or establish rates that are uniform within zones based upon the length of haul to disposal sites, concentration of customers, and other factors which may, in the opinion of the Board, justify establishment of rate differentials.
  - (3) Establish rates for disposal sites that are uniform throughout the county or different rates for each site or class of sites.
  - (4) Increase or decrease rates based on the cost of doing business.
  - (5) Establish an interim rate until the Board makes a final determination of the rate for that type of service.
- (B) In determining rates, the Board shall make a finding that the rates will be just, fair, reasonable, and sufficient to provide proper service to the public. The Board may consider rates charged by other persons performing the same or similar service in the same or other areas. The Board shall give due consideration to:
- (1) The investment in facilities and equipment.
  - (2) The services of management.
  - (3) Local wage scales.
  - (4) The concentration of customers in the area served.
  - (5) Methods of storage, collection, transportation and disposal, salvage, recycling, or reuse.

## EXHIBIT A

- (6) A reasonable return to the franchisee, based upon a percentage of gross receipts under the franchise.
  - (7) The length of haul to disposal facilities.
  - (8) The cost of disposal.
  - (9) The use of transfer stations or transfer systems and the added costs.
  - (10) The cost of alternate methods of disposal.
  - (11) The future service demands of the service area or disposal site which must be anticipated in equipment, facilities, personnel or land.
  - (12) Extra charges for special pickups or pickups on days where service is not normally provided on collection route.
  - (13) Extra charges where the type of character of waste or solid waste, including but not limited to, wastes with peculiarly offensive odors, requires special handling or service.
  - (14) Extra charges for providing janitorial services on the premises where service is provided.
  - (15) In addition, with respect to disposal sites, the type of site, whether the site is open to the public and houses, type of wastes disposed of and method of disposal.
  - (16) Cost of compliance with laws, ordinances or regulations and rules of public agencies or bodies having jurisdiction.
  - (17) Other factors which may, in the opinion of the Committee and the Board, necessarily affect the rates to be charged.
- (C) The Board may require an investigation by the Committee of any proposed rates. For the purpose of making this investigation, the Administrator shall assist the Committee and the Committee is authorized to hold public hearings and to take and receive testimony. Upon completion of such an investigation the Committee shall report the results of any public hearing, its finding and its recommendations to the Board.
- (D) Applications for rate adjustments shall be made on the form provided by the Solid Waste Administrator and must provide all information required by the Administrator.

### Section 5.02 Rate Preferences Prohibited



## EXHIBIT A

- (A) No franchisee subject to rate regulation by this ordinance shall give any rate preference to any person, locality or type of solid waste stored, collected, transported or disposed.
- (B) Nothing in this section is intended to prevent:
- (1) The reasonable establishment of uniform classes of rates based upon length of haul, type of solid wastes stored, collected, transported or disposed of or the number, type and location of customers served or upon other factors as long as such rates are reasonably based upon costs of the particular service and are approved by the Board in the same manner as other rates.
  - (2) Any person from volunteering service at reduced cost for a charitable, community, civic or benevolent purpose.

### Section 5.03 Responsibility For Payment For Charges For Service

Any person who received service shall be responsible for payment for such service. After notice, in writing and mailed to the landlord of any premises, the landlord shall be responsible for payment for service provided to those premises if the tenant does not pay for the service.

### Section 5.04 Passing Through Of Certain Rate Changes

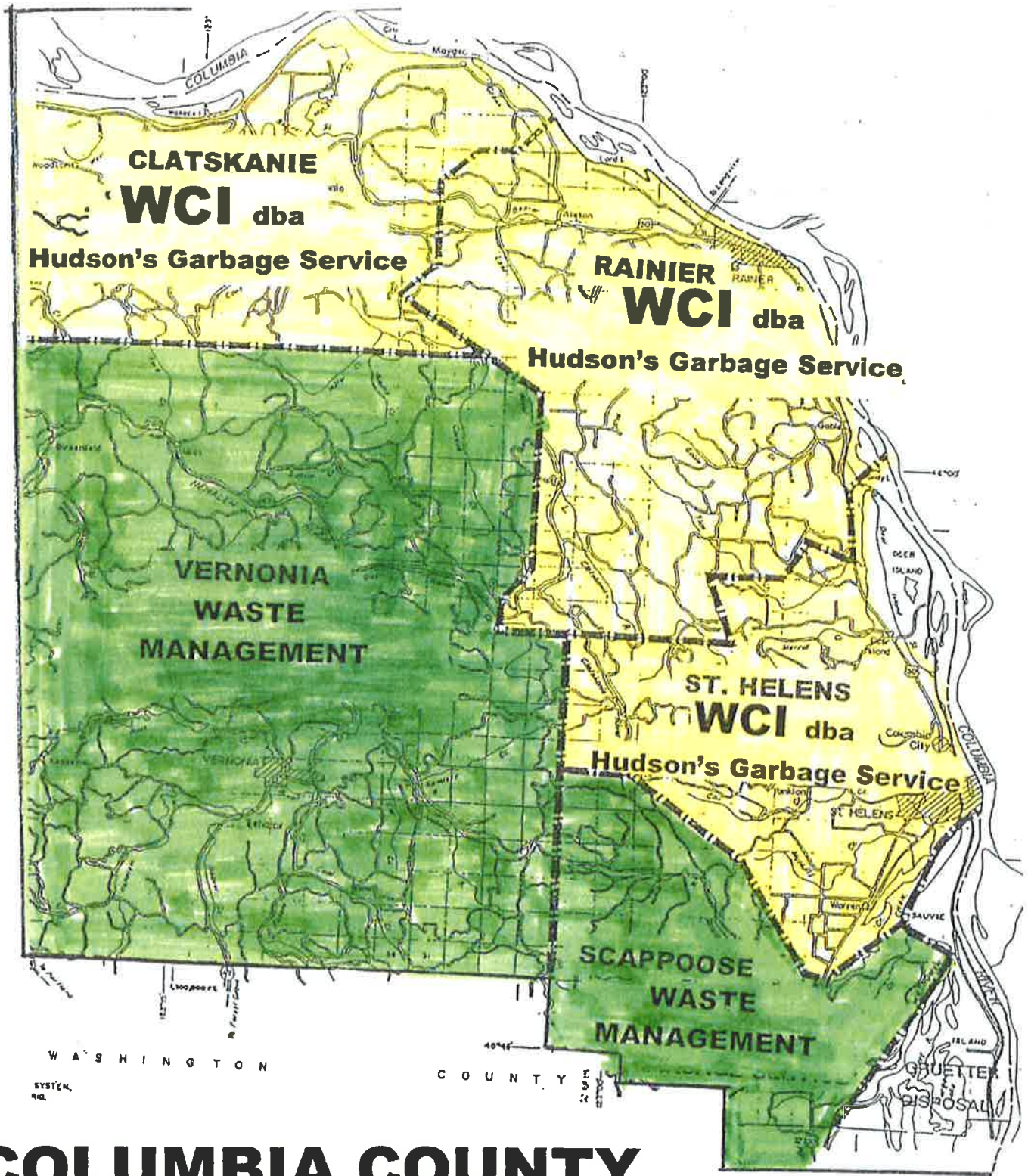
- (A) Notwithstanding the provisions of Sections 5.01 and 5.02, upon recommendation by the Administrator or upon its own recommendation, the Board may, by order or resolution, approve the passing through to customers on a proportional basis any changes in disposal site and transfer station rates that are authorized by governmental bodies.
- (B) In allocating the fee changes in fees and costs to the classes of customers, the Board shall use the following formula:
- (1) Residential Customers: An increase or decrease of two and one quarter cents (\$.0225) per can for each \$1.00 per ton change in fee.
  - (2) Container (Drop Box) Customers: An increase or decrease of fifteen cents (\$.15) per loose yard for each \$1.00 per ton change in fee.
  - (3) Transfer Station Customers: An increase or decrease of \$1.00 per ton (\$.0005 per pound) for each \$1.00 per ton change in fee.
- (C) The date that the increased or decreased disposal fees and/or costs are imposed on the franchise holder shall be the same effective date that such fees and/or

## EXHIBIT A

costs are imposed on the customers and rates may be adjusted retroactively to accomplish this goal.

# **ATTACHMENT 2**

## **Collection Franchise Area Map**



# COLUMBIA COUNTY EXCLUSIVE COLLECTION FRANCHISE AREAS

# **ATTACHMENT 3**

## **WASTE MANAGEMENT**

### **PROPOSED COLLECTION RATES FOR SCAPPOOSE AND VERNONIA RURAL SERVICE AREAS**

Waste Management - Columbia County Operations  
**EXHIBIT A**  
 Proposed Rates for Columbia County Residential Services

Effective ~~August 1, 2014~~ **July 1, 2015**

## Columbia County - Scappoose County Areas

Weekly Service includes Garbage & Every Other Week Recycling  
 - WM Provided Roll Cart for Recycling

0.4%                      0.4%

WEEKLY CAN SERVICE	Current Monthly Curbside Rates	Rate Increase	Disposal Pass Through	New Monthly Curbside Rates
One - 32gal can - 1 pickup per week	\$ 26.81	\$ -	\$ 0.10	\$ 26.91
Two - 32gal cans - 1 pickup per week	\$ 37.54	\$ -	\$ 0.21	\$ 37.75
Three - 32gal can - 1 pickup per week	\$ 48.21	\$ -	\$ 0.31	\$ 48.52
Four - 32gal can - 1 pickup per week	\$ 58.91	\$ -	\$ 0.41	\$ 59.32
One - 32gal can - EOW pickup	\$ 19.80	\$ -	\$ 0.05	\$ 19.85
Each Additional 32gal can	\$ 6.84	\$ -	\$ 0.03	\$ 6.88
<b>ONCE A MONTH SERVICE</b>				
Not available				
<b>**WILL CALL SERVICE</b>				
Will call billed - 32gal can	\$ 9.97	\$ -	\$ 0.20	\$ 10.17
<b>RECYCLING ONLY</b>				
Hauler Provided Bins				
<b>Roll Carts - Provided by WM</b>				
32 Gallon Roll Cart	\$ 1.31	\$ -	\$ -	\$ 1.31
64 Gallon Roll Cart	\$ 1.42	\$ -	\$ -	\$ 1.42
96 Gallon Roll Cart	\$ 1.52	\$ -	\$ -	\$ 1.52

## Columbia County - Vernonia County Areas

Weekly Service includes Garbage Only

0.4%                      0.4%

WEEKLY CAN SERVICE	Current Monthly Curbside Rates	Rate Increase	Disposal Pass Through	New Monthly Curbside Rates
One - 32gal can - 1 pickup per week	\$ 26.84	\$ -	\$ 0.10	\$ 26.94
Two - 32gal cans - 1 pickup per week	\$ 42.04	\$ -	\$ 0.21	\$ 42.25
Three - 32gal can - 1 pickup per week	\$ 57.24	\$ -	\$ 0.31	\$ 57.54
One - 32gal can - EOW pickup	\$ 11.75	\$ -	\$ 0.05	\$ 11.80
Each Additional 32gal can	\$ 5.83	\$ -	\$ 0.03	\$ 5.86
<b>ONCE A MONTH SERVICE</b>				
Not available				
<b>RECYCLING ONLY</b>				
Not available				
<b>Roll Carts - Provided by WM</b>				
0				
32 Gallon Roll Cart	\$ 1.36	\$ -	\$ -	\$ 1.36
64 Gallon Roll Cart	\$ 1.47	\$ -	\$ -	\$ 1.47
96 Gallon Roll Cart	\$ 1.57	\$ -	\$ -	\$ 1.57

**Waste Management - Columbia County Operations**  
**Proposed Rates for Columbia County Commercial Services**

Effective ~~July 1, 2015~~

July 1, 2015

**Columbia County Commercial Rates - Vernonia Rural Area**

0.00%

**Commercial Container Service - Garbage**

**Monthly Container Rates**

Container Size	Current Rate		New Rate	
	Number of Stops Per Week		Number of Stops Per Week	
	1	2	1	2
1 Yard	\$ 120.89	\$ 241.77	\$ 121.55	\$ 243.10
Extra Pick Up	\$ 49.11		\$ 49.27	
2 Yard	\$ 233.50	\$ 467.00	\$ 234.83	\$ 469.66
Extra Pick Up	\$ 74.94		\$ 75.24	
3 Yard	\$ 281.60	\$ 563.19	\$ 283.59	\$ 567.18
Extra Pick Up	\$ 108.16		\$ 108.62	
4 Yard	\$ 498.80	\$ 997.59	\$ 501.45	\$ 1,002.90
Extra Pick Up	\$ 196.45		\$ 197.06	

**Commercial Container Service - Will Call**

**Will Call Service**

	Current Rate		New Rate	
	Dump Fee Per Pull	Rental Fee Per Month	Dump Fee Per Pull	Rental Fee Per Month
	1 Yard	\$ 52.22	\$ 15.05	\$ 52.88
2 Yard	\$ 65.20	\$ 19.35	\$ 65.20	\$ 19.65

**Temp Commercial Container Service**

**Includes Delivery & Removal (additional dumps at Will Call Rates)**

	Current Rate		New Rate	
	Dump Fee Per Pull	Rental Fee Per Month	Dump Fee Per Pull	Rental Fee Per Month
	1 Yard	\$ 86.23	\$ 15.42	\$ 86.39
2 Yard	\$ 111.53	\$ 20.08	\$ 111.84	\$ 19.65

**Commercial Rollcart Service**

	Old Rate	New Rate
1 - 64 gal rollcart - 1 Pickup Weekly	\$ 48.62	\$ 49.02
1 - 96 gal rollcart - 1 Pickup Weekly	\$ 54.41	\$ 55.01

**Waste Management - Columbia County Operations**  
**Proposed Rates for Columbia County Commercial Services**

Effective ~~August 1, 2014~~ **July 1, 2015**

**Columbia County Commercial Rates - Scappoose Rural Area**

0.00%

**Commercial Container Service - Garbage**

**Monthly Container Rates**

Container Size	Current Rate			New Rate		
	Number of Stops Per Week			Number of Stops Per Week		
	1	2	3	1	2	3
1 Yard	\$ 111.03	\$ 222.05	\$ 333.08	\$111.69	\$223.38	\$335.07
Extra Pick Up	\$ 32.87			\$33.12		
1.5 Yard	\$ 128.44	\$ 256.87	\$ 385.31	\$129.43	\$258.87	<del>\$388.30</del>
Extra Pick Up	\$ 37.39			\$37.81		
2 Yard	\$ 166.19	\$ 332.38	\$ 498.57	\$167.52	\$335.03	\$502.55
Extra Pick Up	\$ 66.36			\$66.91		
3 Yard	\$ 249.29	\$ 498.57	\$ 747.86	\$251.28	\$502.56	\$753.83
Extra Pick Up	\$ 99.55			\$100.38		
4 Yard	\$ 332.38	\$ 664.75	\$ 997.13	\$335.03	\$670.07	\$1,005.10
Extra Pick Up	\$ 132.75			\$133.85		

**Commercial Container Service - Recycling**

Fee for Rental of Recycling Containers - Based on once per week service - Thursday Pickup

Cardboard Recycling Only \$30 fee for rental of 2 Yard Container \$ 30.72

This includes weekly dumping of properly prepared Corrugated Cardboard only.

*Cardboard recycling only is permitted in the 2-yard container. At this time, we do not offer commingled or glass recycling in this area.*

**Commercial Container Service - Will Call**

**Will Call Service**

	Current Rate		New Rate	
	Dump Fee	Rental Fee	Dump Fee	Rental Fee
	Per Pull	Per Month	Per Pull	Per Month
1 Yard	\$ 44.68	\$ 16.86	\$44.98	\$ 16.86
1.5 Yard	\$ 49.91	\$ 16.86	\$50.37	\$ 16.86
2 Yard	\$ 83.73	\$ 17.53	\$84.34	\$ 17.53
3 Yard	\$ 124.48	\$ 28.09	\$125.39	\$ 28.09

**Temp Commercial Container Service**

**Includes Delivery & Removal (additional dumps at Will Call Rates)**

	Current Rate		New Rate	
	Dump Fee	Rental Fee	Dump Fee	Rental Fee
	Per Pull	Per Month	Per Pull	Per Month
1 Yard	\$ 68.17	\$ 16.86	\$ 68.17	\$ 16.86
2 Yard	\$ 81.86	\$ 17.53	\$ 81.86	\$ 17.53

**Commercial Rollcart Service**

	Current Rate	New Rate
1 - 64 gal rollcart - 1 Pickup Weekly	\$ 45.41	\$ 45.81
1 - 96 gal rollcart - 1 Pickup Weekly	\$ 50.89	\$ 51.49

**Commercial Rollcart Recycling Service**

	Current Rate	New Rate
1 - 64 gal rollcart - 1 Pickup Weekly	\$ 12.40	\$ 12.40
1 - 96 gal rollcart - 1 Pickup Weekly	\$ 15.16	\$ 15.16



**Waste Management - Columbia County Operations**  
**Proposed Rates for Columbia County Drop Box Services**

EXHIBIT A

Effective ~~August 1, 2014~~ July 1, 2015

0.00%

Description of Service	Current Rate		New Rate
<b>10 YD Haul Rate</b>	<b>\$ 149.15</b>		<b>\$ 149.15</b>
20 YD Haul Rate	\$ 155.81		\$ 155.81
<b>30 YD Haul Rate</b>	<b>\$ 163.17</b>		<b>\$ 163.17</b>
Compactor Hauls	\$ 296.61		\$ 296.61
<b>Mileage Rate</b>	<b>\$ 1.76</b>		<b>\$ 1.76</b>
Container Rent			
<b>10 Yard</b>	<b>\$ 89.84</b>		<b>\$ 89.84</b>
20 Yard	\$ 89.84		\$ 89.84
<b>30 Yard</b>	<b>\$ 89.84</b>		<b>\$ 89.84</b>
Disposal Rate	\$ 85.07		\$ 86.04

# EXHIBIT A

## Columbia County Transfer Station Rate Impact

	<u>Collection</u>	
Current Rate	\$ 85.07	
CPI Adjustment %	1.14%	
New Rate	\$ 86.04	86.04
Change in Rate	\$ 0.97	

## Rate Impact @ \$1.70 per Ton Increase

Container Volume	Residential		Commercial				
	1 can	2 can	1 Yard	1.5 Yard	2 Yard	3 Yard	4 Yard
Disposal Rate Increase	\$ 0.97	\$ 0.97	\$ 0.97	\$ 0.97	\$ 0.97	\$ 0.97	\$ 0.97
Disposal Pass Through	\$ 0.09	\$ 0.20	\$ 0.63	\$ 0.95	\$ 1.26	\$ 1.90	\$ 2.53
Franchise Fee	\$ 0.00	\$ 0.01	\$ 0.03	\$ 0.05	\$ 0.06	\$ 0.09	\$ 0.13
Rate Impact	\$ 0.10	\$ 0.21	\$ 0.66	\$ 1.00	\$ 1.33	\$ 1.99	\$ 2.66

### Section 5.04 Passing Through Of Certain Rate Changes

Notwithstanding the provisions of Sections 5.01 and 5.02, upon recommendation by the Administrator or upon its own recommendation, the Board may, by order or resolution, approve the passing through to customers on a proportional basis any changes in disposal site and transfer station rates that are authorized by governmental bodies.

In allocating the fee changes in fees and costs to the classes of customers, the Board shall use the following formula:

**Residential Customers:** An increase or decrease of two and one quarter cents (\$.0225) per can for each \$1.00 per ton change in fee.

**Container (Drop Box) Customers:** An increase or decrease of fifteen cents (\$.15) per loose yard for each \$1.00 per ton change in fee.

**Transfer Station Customers:** An increase or decrease of \$1.00 per ton (\$.0005 per pound) for each \$1.00 per ton change in fee.

The date that the increased or decreased disposal fees and/or costs are imposed on the franchise holder shall be the same effective date that such fees and/or costs are imposed on the customers and rates may be adjusted retroactively to accomplish this goal.

# **ATTACHMENT 4**

## **WASTE CONNECTIONS**

**(DBA Hudsons Garbage Service)**

### **PROPOSED COLLECTION RATES FOR ST. HELENS, CLATSKANIE AND RAINIER RURAL SERVICE AREAS**

# EXHIBIT A

**HUDSON GARBAGE SERVICE  
RATES EFFECTIVE JULY 1, 2015  
COLUMBIA COUNTY--RAINIER AREA**

**RAINIER COUNTY**

<u>RESIDENTIAL</u>	<u>RATE FREQUENCY</u>	<u>Current Rate</u>	<u>New Rate</u>
<u><b>WEEKLY SERVICE</b></u>			
1 32 Gallon Can Weekly	PER MONTH	\$ 26.11	\$ 27.77
2 32 Gallon Cans Weekly	PER MONTH	\$ 39.47	\$ 42.03
3 32 Gallon Cans Weekly	PER MONTH	\$ 54.69	\$ 58.26
<u><b>EVERY-OTHER-WEEK SERVICE</b></u>			
1 32 Gallon Can Every Other Week	PER MONTH	\$ 22.45	\$ 23.84
2 32 Gallon Cans Every Other Week	PER MONTH	\$ 26.12	\$ 27.78
3 32 Gallon Cans Every Other Week	PER MONTH	\$ 36.07	\$ 38.38
4 32 Gallon Cans Every Other Week	PER MONTH	\$ 40.50	\$ 43.12
5 32 Gallon Cans Every Other Week	PER MONTH	\$ 44.93	\$ 47.87
<u><b>MONTHLY SERVICE</b></u>			
1 32 gallon 1x Monthly		\$ 13.86	\$ 14.71
<u><b>ON-CALL SERVICE</b></u>			
1 32 Gallon On Call Pickup	PER PICKUP	\$ 4.88	\$ 5.19
2 32 Gallon On Call Pickup	PER PICKUP	\$ 9.76	\$ 10.39
3 32 Gallon On Call Pickup	PER PICKUP	\$ 14.64	\$ 15.58
4 32 Gallon On Call Pickup	PER PICKUP	\$ 19.94	\$ 21.40
<u><b>RECYCLE/GREENWASTE RATES</b></u>			
RECYCLE SERVICE ONLY		\$ 6.55	\$ 6.94
<u><b>OTHER CAN SERVICES</b></u>			
EXTRA CAN (32 OR 35 GAL)	PER PICKUP	\$ 5.64	\$ 6.00
EOW OFF WEEK	PER PICKUP	\$ 4.88	\$ 5.19
EXTRA BAG OR BOX	PER PICKUP	\$ 3.78	\$ 4.03
OVERWEIGHT CAN	PER PICKUP	\$ 2.23	\$ 2.39
OVERLOADED CAN	PER PICKUP	\$ 2.23	\$ 2.39
OVERSIZE CAN	PER PICKUP	\$ 2.23	\$ 2.39
SHARPS CONTAINER (Not Offered to New Customers)	PER PICKUP	\$ 26.68	\$ 28.28
SPECIAL TRIP-OFF DAY	PER PICKUP	\$ 20.00	\$ 20.00
ROLL CAN WALK/DRIVE-IN	PER MONTH	\$ 4.00	\$ 4.00
DRIVE-IN ADD'L 100 FT. INCREMENTS	PER MONTH	\$ 2.00	\$ 2.00
SERVICE RESUME/Can REDELIVERY	ONE TIME	\$ 25.00	\$ 25.00
COLLECTION FEES PAID TO 3RD PARTY COLLECTORS PASSED THROUGH IN FULL	ONE TIME		
RETURNED CHECK FEE (passed through in full)	ONE TIME	\$ 20.00	\$ 20.00

# EXHIBIT A

HUDSON GARBAGE SERVICE  
 RATES EFFECTIVE JULY 1, 2015  
 COLUMBIA COUNTY--RAINIER AREA

## RAINIER COUNTY

<u>DROP BOX</u>	<u>RATE FREQUENCY</u>	<u>Current Rate</u>	<u>New Rate</u>
20 YD DROPBOX - HAUL (\$300 COD)	PER PICKUP	\$ 156.74	\$ 166.14
30 YD DROPBOX - HAUL (\$350 COD)	PER PICKUP	\$ 182.87	\$ 193.84
40 YD DROPBOX - HAUL (\$375 COD)	PER PICKUP	\$ 218.45	\$ 231.56
DAILY RENTAL (AFTER 1 WEEK W/NO DUMP)	PER PICKUP	\$ 6.27	\$ 6.65
20 YARD DEPOSIT DUE ON/PRIOR TO DELIVERY	PER PICKUP	\$ 300.00	\$ 300.00
30 YARD DEPOSIT DUE ON/PRIOR TO DELIVERY	PER PICKUP	\$ 350.00	\$ 350.00
40 YARD DEPOSIT DUE ON/PRIOR TO DELIVERY	PER PICKUP	\$ 375.00	\$ 375.00
DISPOSAL FEE PASSED THROUGH with 5% FRANCHISE FEE	PER PICKUP	\$ 89.31	\$ 90.30
 <u>COMMERCIAL</u>			
Temporary 2 Yard Container	PER PICKUP	\$ 64.50	\$ 68.66
Container Overload	PER YARD	\$ 13.45	\$ 14.55
Container Extra Yards	PER YARD	\$ 13.45	\$ 14.55
Return Trip Charge - Business	PER PICKUP	\$ 20.00	\$ 20.00
Walk-In - Business	PER MONTH	\$ 4.00	\$ 4.00
 <u>OTHER RATES</u>			
SM FURNITURE	PER PICKUP	\$ 13.56	\$ 14.40
M/LG FURNITURE	PER PICKUP	\$ 28.22	\$ 29.94
SM APPLIANCE*	PER PICKUP	\$ 13.73	\$ 14.58
M/LG APPLIANCE*	PER PICKUP	\$ 28.38	\$ 30.10
 <u>WEEKLY COMMERCIAL CAN SERVICE</u>			
1 32 Gallon Can Weekly Business	PER MONTH	\$ 19.56	\$ 20.83
2 32 Gallon Cans Weekly Business	PER MONTH	\$ 32.92	\$ 35.09
3 32 Gallon Cans Weekly Business	PER MONTH	\$ 48.14	\$ 51.32
4 32 Gallon Cans Weekly Business	PER MONTH	\$ 61.97	\$ 66.07
95 Gallon Cart Every Other Week Recycle Business	PER MONTH	\$ 6.55	\$ 6.94
 <u>EVERY-OTHER-WEEK COMMERCIAL CAN SERVICE</u>			
1 Can Every Other Week--Business	PER MONTH	\$ 15.90	\$ 16.90
2 Cans Every Other Week--Business	PER MONTH	\$ 19.57	\$ 20.84
 <u>OTHER COMMERCIAL CAN SERVICE</u>			
1 32G OAM Commercial			
1 32G OC Commercial			
Overfill/Overweight Can Business	PER PICKUP	\$ 2.23	\$ 2.39
Oversize Can Business	PER PICKUP	\$ 2.23	\$ 2.39

# EXHIBIT A

**HUDSON GARBAGE SERVICE  
RATES EFFECTIVE JULY 1, 2015  
COLUMBIA COUNTY--RAINIER AREA**

**RAINIER COUNTY**

<u><b>CONTAINER SERVICE</b></u>	<u><b>RATE FREQUENCY</b></u>	<u><b>Current Rate</b></u>	<u><b>New Rate</b></u>
1 Yard Container Weekly Service = 6.3 32 gal cans	PER MONTH	\$ 98.33	\$ 104.87
1 Yard Every Other Week Service	PER MONTH	\$ 68.02	\$ 72.42
1.5 Yard Container Weekly Service = 9.4 32 gal cans	PER MONTH	\$ 136.10	\$ 145.22
1.5 Yard 3x Weekly Service	PER MONTH	\$ 454.69	\$ 484.84
1.5 Yard Every Other Week Service	PER MONTH	\$ 94.06	\$ 100.18
2 Yard Container Weekly Service = 12.6 32 gal cans	PER MONTH	\$ 186.85	\$ 199.34
2 Yard Container 2x Weekly Service	PER MONTH	\$ 250.74	\$ 268.34
2 Yard Every Other Week Service	PER MONTH	\$ 129.17	\$ 137.56
3 Yard Container Weekly Service = 18.9 32 gal cans	PER MONTH	\$ 272.20	\$ 290.45
3 Yard Container 2x Weekly Service	PER MONTH	\$ 480.21	\$ 512.85
4 Yard Container Weekly Service	PER MONTH	\$ 352.39	\$ 376.09
4 Yard Every Other Week Service	PER MONTH	\$ 184.33	\$ 196.67
6 Yard Container Weekly Service	PER MONTH	\$ 501.78	\$ 535.72

# EXHIBIT A

**CLATSKANIE DISPOSAL SERVICE  
RATES EFFECTIVE JULY 1, 2015  
COLUMBIA COUNTY--CLATSKANIE AREA**

CLATSKANIE COUNTY

RESIDENTIAL

WEEKLY SERVICE

	RATE FREQUENCY	Current Rate	New Rate
1 32 Gallon Can Weekly	PER MONTH	\$ 28.17	\$ 28.27
2 32 Gallon Cans Weekly	PER MONTH	\$ 47.90	\$ 48.09
3 32 Gallon Cans Weekly	PER MONTH	\$ 68.19	\$ 68.48
4 32 Gallon Cans Weekly	PER MONTH	\$ 88.55	\$ 88.93
5 32 Gallon Cans Weekly	PER MONTH	\$ 108.90	\$ 109.38

EVERY-OTHER-WEEK SERVICE

1 32 Gallon Can Every Other Week	PER MONTH	\$ 17.89	\$ 17.94
2 32 Gallon Cans Every Other Week	PER MONTH	\$ 28.67	\$ 28.77
3 32 Gallon Cans Every Other Week	PER MONTH	\$ 39.48	\$ 39.62

MONTHLY SERVICE

32 gallon 1x Monthly	PER MONTH	\$ 8.90	\$ 8.92
2 32 gallon 1x Monthly	PER MONTH	\$ 15.75	\$ 15.79
3 32 gallon 1x Monthly	PER MONTH	\$ 22.57	\$ 22.64
4 32 gallon 1x Monthly	PER MONTH	\$ 28.15	\$ 28.24

ON-CALL SERVICE

32 Gallon On Call Pickup	PER PICKUP	\$ 8.90	\$ 8.92
2 32 Gallon On Call Pickup	PER PICKUP	\$ 15.75	\$ 15.79
3 32 Gallon On Call Pickup	PER PICKUP	\$ 22.57	\$ 22.64
4 32 Gallon On Call Pickup	PER PICKUP	\$ 29.38	\$ 29.47

RECYCLE/GREENWASTE RATES

RECYCLE SERVICE ONLY	PER MONTH	\$ 8.53	\$ 8.53
RESI RECYCLE WITH GARBAGE	PER MONTH	\$ 4.53	\$ 4.53

OTHER CAN SERVICES

EXTRA CAN (32 OR 35 GAL)	PER PICKUP	\$ 6.83	\$ 6.85
EOW OFF WEEK	PER PICKUP	\$ 8.90	\$ 8.92
EXTRA BAG OR BOX	PER PICKUP	\$ 4.28	\$ 4.30
OVERWEIGHT CAN	PER PICKUP	\$ 2.51	\$ 2.53
OVERLOADED CAN	PER PICKUP	\$ 2.51	\$ 2.53
OVERSIZE CAN	PER PICKUP	\$ 2.51	\$ 2.53
SHARPS CONTAINER (Not Offered to New Customers)	PER PICKUP	\$ 23.77	\$ 23.77
SPECIAL TRIP-OFF DAY	PER PICKUP	\$ 20.00	\$ 20.00
ROLL CAN WALK/DRIVE-IN	PER MONTH	\$ 4.00	\$ 4.00
DRIVE-IN ADD'L 100 FT. INCREMENTS	PER MONTH	\$ 2.00	\$ 2.00
SERVICE RESUME/Can REDELIVERY	ONE TIME	\$ 25.00	\$ 25.00
COLLECTION FEES PAID TO 3RD PARTY COLLECTORS PASSED THROUGH IN FULL	ONE TIME		
RETURNED CHECK FEE (passed through in full)	ONE TIME	\$ 20.00	\$ 25.00

EXHIBIT A

CLATSKANIE DISPOSAL SERVICE  
RATES EFFECTIVE JULY 1, 2015  
COLUMBIA COUNTY--CLATSKANIE AREA

CLATSKANIE COUNTY

DROP BOX

	<u>RATE FREQUENCY</u>	<u>Current Rate</u>	<u>New Rate</u>
20 or 30 YD DROP BOX - HAUL (\$414 COD)	PER PICKUP	\$ 298.79	\$ 298.79
40 YD DROPBOX - HAUL (\$450 COD)	PER PICKUP	\$ 334.64	\$ 334.64
DAILY RENTAL (AFTER 1 WEEK W/NO DUMP)	PER PICKUP	\$ 7.13	\$ 7.13
DISPOSAL FEE PASSED THROUGH with 5% FRANCHISE FEE	PER PICKUP	\$ 89.31	\$ 90.30



# EXHIBIT A

**CLATSKANIE DISPOSAL SERVICE  
RATES EFFECTIVE JULY 1, 2015  
COLUMBIA COUNTY--CLATSKANIE AREA**

CLATSKANIE COUNTY

<u>COMMERCIAL</u>	<u>RATE FREQUENCY</u>	<u>Current Rate</u>	<u>New Rate</u>
TEMP 2YD CONT	PER PICKUP	\$ 72.25	\$ 72.40
XTRA PER DAY	PER DAY	\$ 2.38	\$ 2.38
CONTAINER OVERLOAD	PER PICKUP	\$ 14.70	\$ 14.85
CONTAINER PER/EXTRA YD	PER PICKUP	\$ 14.70	\$ 14.85
 <u>OTHER RATES</u>			
TIRE under 16" no/rim	PER PICKUP	\$ 5.95	\$ 5.96
TIRE under 16" w/rim	PER PICKUP	\$ 14.26	\$ 14.27
BATTERY	PER PICKUP	\$ 5.95	\$ 5.96
HOT WATER HEATER	PER PICKUP	\$ 31.80	\$ 31.85
SM MATTRESS	PER PICKUP	\$ 10.37	\$ 10.41
M/LG MATTRESS	PER PICKUP	\$ 19.26	\$ 19.31
SM FURNITURE	PER PICKUP	\$ 15.14	\$ 15.15
M/LG FURNITURE	PER PICKUP	\$ 31.57	\$ 31.59
SM APPLIANCE*	PER PICKUP	\$ 15.38	\$ 15.42
M/LG APPLIANCE*	PER PICKUP	\$ 31.80	\$ 31.85
 <u>WEEKLY COMMERCIAL CAN SERVICE W/RECYCLING</u>			
1 32 Gallon Can Weekly Business	PER MONTH	\$ 28.17	\$ 28.27
 <u>EVERY-OTHER-WEEK COMM CAN SVC W/RECYCLING</u>			
1 Can Every Other Week--Business	PER MONTH	\$ 17.89	\$ 17.94
 <u>OTHER COMMERCIAL CAN SERVICE</u>			
32 gallon 1x Monthly Business	PER MONTH	\$ 8.90	\$ 8.92
32 Gallon On Call Pickup Business	PER MONTH	\$ 8.90	\$ 8.92
Overfill/Overweight Can Business	PER PICKUP	\$ 2.51	\$ 2.53
Commercial Recycling Service	PER MONTH	\$ 4.53	\$ 4.53
 <u>CONTAINER SERVICE W/ RECYCLING</u>			
1 Yard Container Weekly Service = 6.3 32 gal cans	PER MONTH	\$ 158.63	\$ 159.27
1 Yard Every Other Week Service	PER MONTH	\$ 86.87	\$ 87.19
1YD OAM (not offered to new customers)	PER MONTH	\$ 43.47	\$ 43.62
1Yard On Call Pickup (not offered to new customers)	PER PICKUP	\$ 38.25	\$ 38.40
1.5 Yard Container Weekly Service = 6.3 32 gal cans	PER MONTH	\$ 227.79	\$ 228.75
1.5 Yard Every Other Week Service	PER MONTH	\$ 122.08	\$ 122.56
1.5YD OAM (not offered to new customers)	PER MONTH	\$ 60.58	\$ 60.80
1.5YD OPU (not offered to new customers)	PER PICKUP	\$ 55.54	\$ 55.76
2 Yard Container Weekly Service = 12.6 32 gal cans	PER MONTH	\$ 297.79	\$ 299.07
*Each additional	PER MONTH	\$ 274.81	\$ 276.09
2 Yard Container 2x Weekly Service	PER MONTH	\$ 595.59	\$ 598.14
2 Yard Every Other Week Service	PER MONTH	\$ 158.33	\$ 158.97
2YD OAM (not offered to new customers)	PER MONTH	\$ 77.42	\$ 77.71
2YD OPU (not offered to new customers)	PER PICKUP	\$ 72.99	\$ 73.28
4 Yard Container 1x Weekly Service	PER MONTH	\$ 521.93	\$ 524.48

# EXHIBIT A

**HUDSON GARBAGE SERVICE  
RATES EFFECTIVE JULY 1, 2015  
COLUMBIA COUNTY--ST. HELENS AREA**

	RATE FREQUENCY	ST. HELENS COUNTY	
		Current Rate	New Rate
<b><u>RESIDENTIAL</u></b>			
<b><u>WEEKLY SERVICE</u></b>			
1 32 Gallon Can Weekly	PER MONTH	\$ 28.09	\$ 28.19
2 32 Gallon Cans Weekly	PER MONTH	\$ 44.09	\$ 44.28
3 32 Gallon Cans Weekly	PER MONTH	\$ 60.09	\$ 60.38
4 32 Gallon Cans Weekly	PER MONTH	\$ 76.05	\$ 76.43
5 32 Gallon Cans Weekly	PER MONTH	\$ 92.10	\$ 92.58
6 32 Gallon Cans Weekly	PER MONTH	\$ 108.14	\$ 108.71
<b><u>EVERY-OTHER-WEEK SERVICE</u></b>			
1 32 Gallon Can Every Other Week	PER MONTH	\$ 21.42	\$ 21.47
2 32 Gallon Cans Every Other Week	PER MONTH	\$ 34.13	\$ 34.23
3 32 Gallon Cans Every Other Week	PER MONTH	\$ 48.57	\$ 48.71
4 32 Gallon Cans Every Other Week	PER MONTH	\$ 63.02	\$ 63.21
<b><u>MONTHLY SERVICE</u></b>			
1 32 gallon 1x Monthly	PER MONTH	\$ 8.97	\$ 8.99
2 32 gallon 1x Monthly	PER MONTH	\$ 13.00	\$ 13.04
3 32 gallon 1x Monthly	PER MONTH	\$ 17.06	\$ 17.13
4 32 gallon 1x Monthly	PER MONTH	\$ 21.13	\$ 21.22
1 35 gallon 1x Monthly	PER MONTH	\$ 8.97	\$ 8.99
<b><u>ON-CALL SERVICE</u></b>			
1 32 Gallon On Call Pickup	PER PICKUP	\$ 9.67	\$ 9.69
2 32 Gallon On Call Pickup	PER PICKUP	\$ 15.12	\$ 15.16
3 32 Gallon On Call Pickup	PER PICKUP	\$ 19.90	\$ 19.97
<b><u>RECYCLE/GREENWASTE RATES</u></b>			
RECYCLE SERVICE ONLY	PER MONTH	\$ 8.37	\$ 8.37
RESI RECYCLE WITH GARBAGE	PER MONTH	\$ 4.45	\$ 4.45
<b><u>OTHER CAN SERVICES</u></b>			
EXTRA CAN (32 OR 35 GAL)	PER PICKUP	\$ 6.76	\$ 6.78
EOW OFF WEEK	PER PICKUP	\$ 9.67	\$ 9.69
EXTRA BAG OR BOX	PER PICKUP	\$ 3.39	\$ 3.41
OVERWEIGHT CAN	PER PICKUP	\$ 2.75	\$ 2.77
OVERLOADED CAN	PER PICKUP	\$ 2.75	\$ 2.77
OVERSIZE CAN	PER PICKUP	\$ 2.75	\$ 2.77
SHARPS CONTAINER (Not Offered to New Customers)	PER PICKUP	\$ 26.21	\$ 26.21
SPECIAL TRIP-OFF DAY	PER PICKUP	\$ 20.00	\$ 20.00
ROLL CAN WALK/DRIVE-IN	PER MONTH	\$ 4.00	\$ 4.00
DRIVE-IN ADDI'L 100 FT. INCREMENTS	PER MONTH	\$ 2.00	\$ 2.00
SERVICE RESUME/Can REDELIVERY	ONE TIME	\$ 25.00	\$ 25.00
COLLECTION FEES PAID TO 3RD PARTY COLLECTORS			
PASSED THROUGH IN FULL	ONE TIME		
RETURNED CHECK FEE (passed through in full)	ONE TIME	\$ 20.00	\$ 20.00

# EXHIBIT A

HUDSON GARBAGE SERVICE  
 RATES EFFECTIVE JULY 1, 2015  
 COLUMBIA COUNTY--ST. HELENS AREA

	RATE FREQUENCY	ST. HELENS COUNTY	
		Current Rate	New Rate
<b><u>COMMERCIAL</u></b>			
TEMP 2YD CONT	PER PICKUP	\$ 76.65	\$ 76.94
XTRA PER DAY	PER DAY	\$ 2.63	\$ 2.63
CONTAINER OVERLOAD	PER PICKUP	\$ 16.51	\$ 16.80
CONTAINER PER/EXTRA YD	PER PICKUP	\$ 16.51	\$ 16.80
<b><u>OTHER RATES</u></b>			
TIRE under 16" no/rim	PER PICKUP	\$ 6.55	\$ 6.56
TIRE under 16" w/rim	PER PICKUP	\$ 15.72	\$ 15.73
BATTERY	PER PICKUP	\$ 6.55	\$ 6.56
HOT WATER HEATER	PER PICKUP	\$ 35.24	\$ 35.29
SM MATTRESS	PER PICKUP	\$ 11.47	\$ 11.51
M/LG MATTRESS	PER PICKUP	\$ 17.16	\$ 17.21
SM FURNITURE	PER PICKUP	\$ 16.78	\$ 16.79
M/LG FURNITURE	PER PICKUP	\$ 35.01	\$ 35.03
SM APPLIANCE*	PER PICKUP	\$ 17.05	\$ 17.09
M/LG APPLIANCE*	PER PICKUP	\$ 35.24	\$ 35.29
<b><u>WEEKLY COMMERCIAL CAN SERVICE W/RECYCLING</u></b>			
1 32 Gallon Can Weekly Business	PER MONTH	\$ 28.09	\$ 28.19
2 32 Gallon Can Weekly Business	PER MONTH	\$ 44.09	\$ 44.28
3 32 Gallon Can Weekly Business	PER MONTH	\$ 60.09	\$ 60.38
4 32 Gallon Can Weekly Business	PER MONTH	\$ 76.05	\$ 76.43
5 32 Gallon Can Weekly Business	PER MONTH	\$ 92.10	\$ 92.58
7 32 Gallon Can Weekly Business	PER MONTH	\$ 123.96	\$ 124.63
1 95 Gallon Cart Weekly Business	PER MONTH	\$ 60.09	\$ 60.38
2 95 Gallon Cart Weekly Business	PER MONTH	\$ 92.44	\$ 93.01
3 95 Gallon Cart Weekly Business	PER MONTH	\$ 126.36	\$ 127.22
<b><u>EVERY-OTHER-WEEK COMMERCIAL CAN SVC W/ RECYCLING</u></b>			
1 Can Every Other Week--Business	PER MONTH	\$ 21.42	\$ 21.47
<b><u>OTHER COMMERCIAL CAN SERVICE</u></b>			
32 gallon 1x Monthly Business	PER MONTH	\$ 8.97	\$ 8.99
32 Gallon On Call Pickup Business	PER PICKUP	\$ 9.67	\$ 9.69
Overfill/Overweight Can Business	PER PICKUP	\$ 2.75	\$ 2.78
Commercial Recycling Service	PER MONTH	\$ 4.45	\$ 4.45

# EXHIBIT A

**HUDSON GARBAGE SERVICE  
RATES EFFECTIVE JULY 1, 2015  
COLUMBIA COUNTY--ST. HELENS AREA**

	RATE FREQUENCY	ST. HELENS COUNTY	
		Current Rate	New Rate
<b><u>CONTAINER SERVICE W/ RECYCLING</u></b>			
1 Yard Container Weekly Service = 6.3 32 gal cans	PER MONTH	\$ 124.05	\$ 124.69
*Each additional	PER MONTH	\$ 113.39	\$ 114.03
1 Yard Container 2 x Weekly Service	PER MONTH	\$ 226.91	\$ 228.19
*Each additional	PER MONTH	\$ 208.26	\$ 209.54
1.5 Yard Container 3 x Weekly Service	PER MONTH	\$ 330.97	\$ 332.88
*Each additional	PER MONTH	\$ 312.04	\$ 313.95
1.5 Yard Container 4 x Weekly Service	PER MONTH	\$ 452.78	\$ 455.33
1.5 Yard Container 5 x Weekly Service	PER MONTH	\$ 565.96	\$ 569.15
1 Yard Every Other Week Service	PER MONTH	\$ 69.77	\$ 70.09
1YD OAM (not offered to new customers)	PER MONTH	\$ 34.57	\$ 34.72
1Yard On Call Pickup (not offered to new customers)	PER PICKUP	\$ 35.64	\$ 35.79
1.5 Yard Container Weekly Service = 9.5 32 gal cans	PER MONTH	\$ 168.25	\$ 169.21
*Each additional	PER MONTH	\$ 157.43	\$ 158.39
1.5 Yard Container 2 x Weekly Service	PER MONTH	\$ 316.23	\$ 318.14
*Each additional	PER MONTH	\$ 307.79	\$ 309.70
1.5 Yard Container 3 x Weekly Service	PER MONTH	\$ 462.18	\$ 465.05
*Each additional	PER MONTH	\$ 426.53	\$ 429.40
1.5 Yard Every Other Week Service	PER MONTH	\$ 132.87	\$ 133.35
1.5YD OAM (not offered to new customers)	PER MONTH	\$ 66.07	\$ 66.29
1.5YD OPU (not offered to new customers)	PER PICKUP	\$ 43.03	\$ 43.25
2 Yard Container Weekly Service = 12.6 32 gal cans	PER MONTH	\$ 221.30	\$ 222.58
*Each additional	PER MONTH	\$ 204.93	\$ 206.21
2 Yard Container 2x Weekly Service	PER MONTH	\$ 410.10	\$ 412.65
*Each additional	PER MONTH	\$ 377.56	\$ 380.11
2 Yard Container 3x Weekly Service	PER MONTH	\$ 599.31	\$ 603.14
*Each additional	PER MONTH	\$ 552.87	\$ 556.70
2 Yard Every Other Week Service	PER MONTH	\$ 167.55	\$ 168.19
2YD OAM (not offered to new customers)	PER MONTH	\$ 0.73	\$ 1.02
2 Yard On Call (not offered to new customers)	PER PICKUP	\$ 52.37	\$ 52.66
3 Yard Container 1x Weekly Service	PER MONTH	\$ 308.20	\$ 310.11
3 Yard Container 2x Weekly Service	PER MONTH	\$ 543.15	\$ 546.98
3 Yard Container 3x Weekly Service	PER MONTH	\$ 777.84	\$ 783.58
3 Yard Container 4x Weekly Service	PER MONTH	\$ 1,012.53	\$ 1,020.19
3 Yard Container 5x Weekly Service	PER MONTH	\$ 1,247.29	\$ 1,256.86
4 Yard Container 1x Weekly Service	PER MONTH	\$ 379.91	\$ 382.46
4 Yard Container 2x Weekly Service	PER MONTH	\$ 706.31	\$ 711.41
4 Yard Container 3x Weekly Service	PER MONTH	\$ 1,016.32	\$ 1,023.98
4 Yard Container 4x Weekly Service	PER MONTH	\$ 1,326.33	\$ 1,336.54
4 Yard Container 5x Weekly Service	PER MONTH	\$ 1,636.41	\$ 1,649.17
5 Yard Container 1x Weekly Service	PER MONTH	\$ 448.80	\$ 451.99
5 Yard Container 2x Weekly Service	PER MONTH	\$ 879.36	\$ 885.74
5 Yard Container 3x Weekly Service	PER MONTH	\$ 1,309.60	\$ 1,319.17
5 Yard Container 4x Weekly Service	PER MONTH	\$ 1,739.83	\$ 1,752.59
5 Yard Container 5x Weekly Service	PER MONTH	\$ 2,170.14	\$ 2,186.09

# EXHIBIT A

HUDSON GARBAGE SERVICE  
 RATES EFFECTIVE JULY 1, 2015  
 COLUMBIA COUNTY--ST. HELENS AREA

	RATE FREQUENCY	<u>ST. HELENS COUNTY</u>			
		Current Rate		New Rate	
7 Yard Container 1x Weekly Service	PER MONTH	\$	684.94	\$	689.41
7 Yard Container 2x Weekly Service	PER MONTH	\$	1,177.76	\$	1,186.69
7 Yard Container 3x Weekly Service	PER MONTH	\$	1,670.10	\$	1,683.50
7 Yard Container 4x Weekly Service	PER MONTH	\$	2,241.07	\$	2,258.94
7 Yard Container 5x Weekly Service	PER MONTH	\$	2,654.89	\$	2,677.22